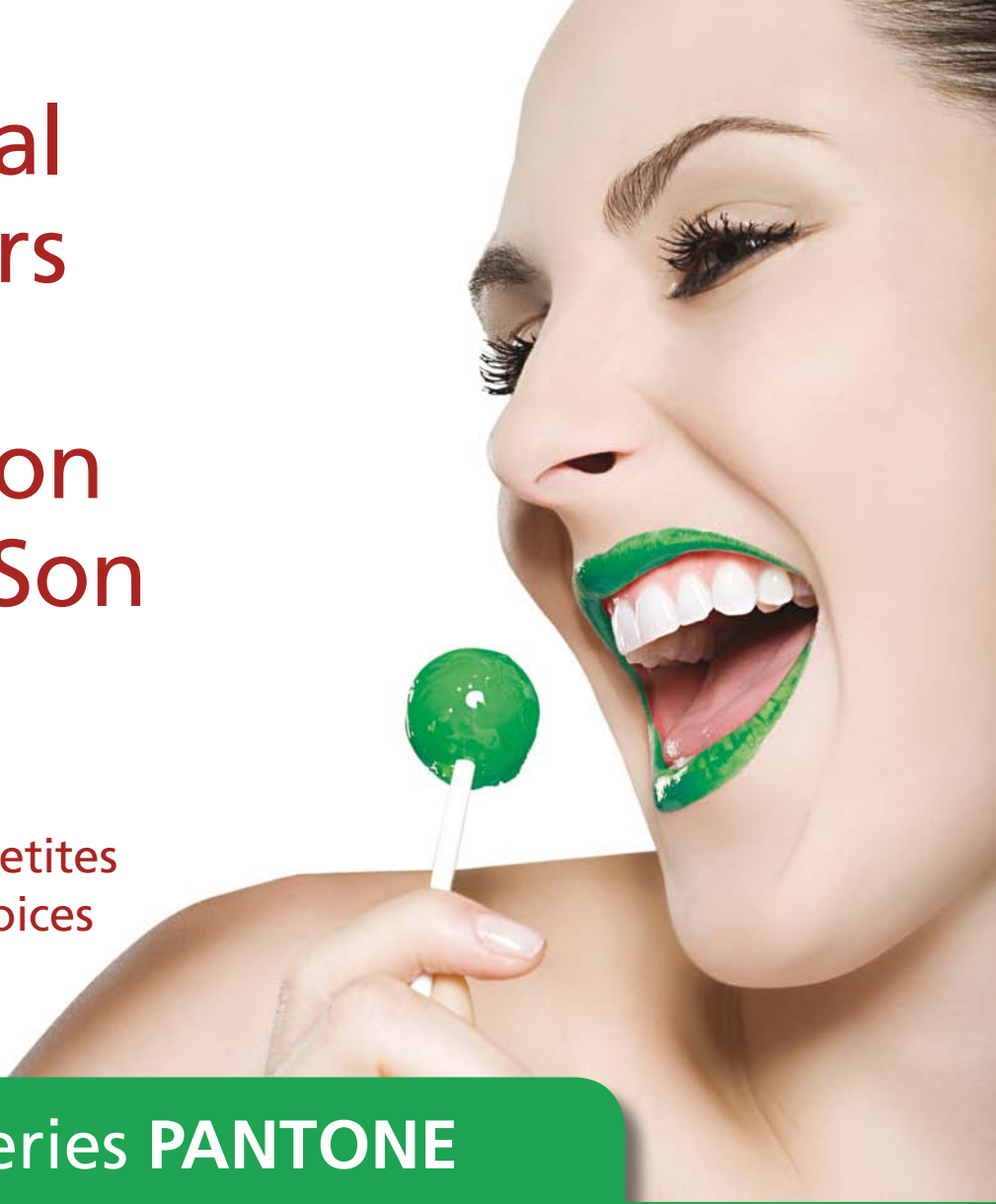


Natural Colours of Quickson by Van Son

Different Appetites
Different Choices



Quickson Series PANTONE

Choose Matching Colours

Quickson Series PANTONE Basic Colours provide the solution you need to precisely match the designer's choice from the PANTONE® Colour guides, or even specially formulated corporate or branded colours. Suitable for use on a broad range of substrates, Quickson Series PANTONE also serves up a host of impressive characteristics that include precision dot sharpness and a high gloss that will please the most discriminating eye.

When you choose Quickson Series PANTONE Basic Colours, you get Van Son's deep and vibrant hues, unequalled trapping capabilities, fast setting and excellent rub resistance. Quickson Series PANTONE inks are formulated to work in combination with the Quickson SUPREME, Quickson PREMIUM and all other process colours from the Quickson range. For matching colours, choose Quickson Series PANTONE.

For colours so real you can almost taste them choose Quickson inks, made by Van Son, and used by professionals... the choice is yours.



Quickson Series PANTONE

Universal offset ink

- Compatible with Quickson SUPREME, Quickson PREMIUM and all other process colours from the Quickson range
- Suitable for all types of mid-to-large size sheetfed offset presses, can be used with and without IPA and IPA substitutes
- Works well in combination with infra-red drying units, offering an even faster setting and drying
- Suitable for a wide range of finishing applications, like foil or lamination
- Colours from the PANTONE® Colour Formula Guides and special matches available from Van Son's Special Colour Service

INK SCAN

Fast Drying

Ink Duct Stability

●●●●○○○○

Work & Turn

●●●●●○○○

Colour Intensity

●●●●●●●●

Setting

●●●●●○○○

Rub Resistance

●●●●○○○○

Gloss

●●●●○○○○

Perfecting

●

Eco friendly

SUBSTRATES

++

Gloss coated

+++

Matt coated

+++

Uncoated

+++

Recycled

+++

Carton Board

++

PE-Carton

+

LWC/Label Paper

RESISTANCES

	Vacuum Tin 1 kg	Vacuum Tin 2.5 kg	Lightfastness	Alcohol Resistance	Alkaline Resistance	Nitro Cellulose Varnish	Soap Resistance	UV Varnish Ability	Foil Lamination Ability	Calendering Ability	Press Varnish Ability	Aqueous Coating Ability
Quickson Series PANTONE® Colours*												
PANTONE Yellow	VS91100	VS91300	5	+	+	+	+	+	+	+	+	+
PANTONE Warm Red	VS91101	VS91301	3	+	-	-	-	+	-	-	+	-
PANTONE Rubine Red	VS91102	VS91302	5	+	-	+	-	+	+	+	+	-
PANTONE Rhodamine Red	VS91103	VS91303	4	-	-	-	-	-	-	-	+	-
PANTONE Purple	VS91104	VS91304	4	-	-	-	-	-	-	-	+	-
PANTONE Reflex Blue	VS91105	VS91305	3	-	+	-	-	-	-	-	+	+/-
PANTONE Process Blue	VS91106	VS91306	8	+	+	+	+	+	+	+	+	+
PANTONE Green	VS91107	VS91307	8	+	+	+	+	+	+	+	+	+
PANTONE Transparent White	VS91108	VS91308	n/a	+	+	+	+	+	+	+	+	+
PANTONE Black	VS91109	VS91309	8	+	+	+	+	+	+	+	+	+
PANTONE Violet	VS91110	VS91310	4	-	-	-	-	-	-	-	+	-
Opaque White	VS91111 ⁽¹⁾	VS91311 ⁽²⁾	8	+	+	+	+	+	+	+	+	+
PANTONE Yellow 012	VS91112	VS91312	5/6	+	+	+	+	+	+	+	+	+
PANTONE Orange 021	VS91113	VS91313	6	+	+	+	+	+	+	+	+	+
PANTONE Red 032	VS91114	VS91314	6/7	+	+	+	+	+	+	+	+	+
PANTONE Blue 072	VS91115	VS91315	4	-	+	-	+/-	-	-	-	+	+
PANTONE Blue 293	VS91118		3	-	+	-	-	-	-	-	+	+/-
PANTONE Yellow 109	VS91123		3	+	-	-	-	+	-	-	+	-
PANTONE Red 185	VS91127		3	+	-	-	-	+	-	-	+	-
PANTONE Blue 286	VS91129		3	-	+	-	-	-	-	-	+	+/-
PANTONE Blue 300	VS91130		3	-	+	-	-	-	-	-	+	+/-
PANTONE Red 485	VS91135		5	+	-	+	-	+	+	+	+	-
Mixing White	VS91170		8	+	+	+	-	+	+	+	+	+

* Prints in accordance with ISO 12647-2

(1 net wt. 1.5 kgs. (2 net wt. 4 kgs.

PANTONE® is a registered trademark of Pantone, Inc.

